



What size inverter should I use for a 12v 70W solar panel





Overview

A 4-6 kW inverter is ideal, depending on the load and surge requirements. Is it better to use one inverter or multiple inverters?

A. Your inverter size should match your solar array's capacity, not your electricity bill. Your inverter needs to handle that. In this guide, you'll learn what size solar inverter you need, how to size an inverter for solar systems step by step, how panel output affects inverter capacity and also how many inverters per solar panel make sense for different setups without the headache. During our research, we discovered that most inverters range in size from 300 watts up to over 3000 watts. Too small = wasted energy

What Is a Solar Inverter and Why Does Size Matter?

Swap out old appliances for energy-efficient ones to cut down your. Your solar panel inverter converts the DC electricity your panels produce into AC power that runs your home appliances and electronics. Getting the size right means the difference between 95% efficiency and 70% efficiency, which translates to hundreds of dollars in lost energy production every.



What size inverter should I use for a 12v 70W solar panel



Inverter Sizing Calculator

Enter your solar array capacity and load requirements to determine optimal inverter size. Inverter Size = MAX (Array Capacity \times 1.15, Peak Load \times 1.25) for safety margin. This formula has been verified by ...

[The Only Inverter Size Chart You'll Ever Need](#)

Picking the right solar inverter isn't rocket science, but it's not a wild guess either. Match your inverter size to your solar panel output, leave a little ...



[What Size Solar Inverter Do I Need? Experts Break It Down](#)

Picking the right solar inverter isn't rocket science, but it's not a wild guess either. Match your inverter size to your solar panel output, leave a little headroom, and don't cheap out on quality.

[How To Size A Solar Inverter in 3 Easy Steps](#)

In this guide, we share 3 easy steps on how to size a solar inverter correctly. We explain the key concepts that determine solar inverter sizing including your power needs, the type and number of ...



How to Match Solar Panel Inverter Size to Your System Output

Most solar professionals recommend sizing your inverter for solar panels between 75% and 115% of your total panel wattage, with the sweet spot around 1:1.15 --meaning your inverter is ...

[The Only Inverter Size Chart You'll Ever Need](#)

We created a comprehensive inverter size chart to help you select the correct inverter to power your appliances. The need for an inverter size chart first became apparent when researching ...



[Complete Solar Inverter Sizing Guide](#)

Get it right and your system runs smoothly for years. In this guide, you'll learn what size solar inverter you need, how to size an inverter for solar systems step by step, how panel output ...

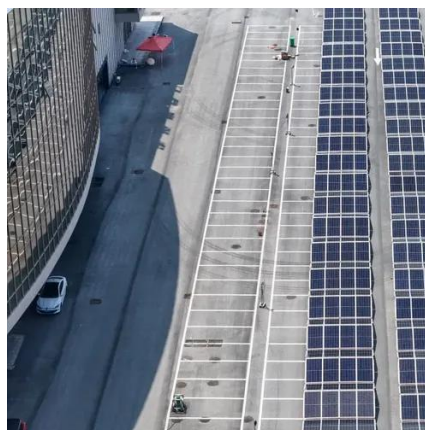


[Solar Panel Inverter Size Calculator: Know](#)



What You ...

Planning to install solar panels? You'll need a solar inverter. Follow this guide to calculate the best solar panel inverter size for your system.



Inverter Size Calculator - self2solar

Determining the correct inverter size depends on your solar array's capacity and your household's power needs. Generally, the inverter should be sized to match about 80-100% of your ...

How to Choose the Right Size Solar Inverter: Step-by-Step with Real

Wondering what size solar inverter do I need for your solar system? This guide walks you through calculating inverter size based on panel capacity, power usage, and safety margins.



Solar Inverter Sizing Guide: How to Size Your Inverter

Learn how to properly size your solar inverter with our complete guide. Discover the optimal DC-to-AC ratio and avoid costly sizing mistakes.



Contact Us

For catalog requests, pricing, or partnerships, please visit:

<https://id2market.eu>

Phone: +34 910 56 87 45

Email: info@id2market.eu

Scan the QR code to access our WhatsApp.

