



What size is a 600A solar panel





Overview

5 x 3 feet with a thickness of 1. The energy output varies by manufacturer and model, but it usually ranges from 250 to 400 watts. For instance, your required energy per month is 5-7KWh, considering a 250W panel, you will need at least 20-28 panels. The size is about 5. Here's the key distinction every homeowner should understand: Most residential solar panels in 2025 come in three main configurations: The most common choice for. There are 3 standardized sizes of solar panels, namely: 60-cell solar panels size. That's basically a 66×39 solar panel. But what is the wattage?

That is unfortunately not listed at all. 72-cell solar panel. How many watts does a 600A solar panel have?

1. A 600A solar panel typically does not exist as a standard product; instead, the A refers to amperage and not a specific wattage rating. However, the exact dimensions depend heavily on the panel's technology, wattage, and the manufacturer's design. Another commercial type is a 96-cell.



What size is a 600A solar panel



Solar Panel Size and Wattage Chart: Standard Sizes & Uses for Each

Using a solar panel size chart can help you choose the best types of solar panels for your home or application. Because the size of a standard solar panel can vary, a chart that outlines the ...

[Solar Panel Size Guide \(with 4 Charts\)](#)

Solar panel sizes are measured in two ways: watt output and physical dimensions. Physical dimensions refer to the height, length and width of the solar array. The wattage refers to how much power the ...

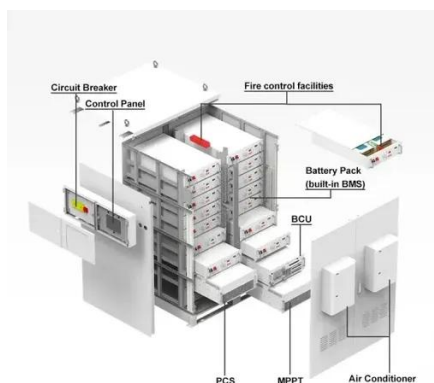


[Complete guide to solar panel size and weigh](#)

Below is a range of solar panel sizes. The 50W solar panel measures 670*540*25mm and weighs 20kg. The 100W solar panel has dimensions of 1030*460*30mm and weighs 20.3kg. The ...

[Solar Panel Size & Dimensions Guide 2025 . Complete Specs](#)

In this comprehensive guide, you'll learn everything you need to know about solar panel sizing, from standard dimensions to weight considerations, helping you determine the perfect solar ...

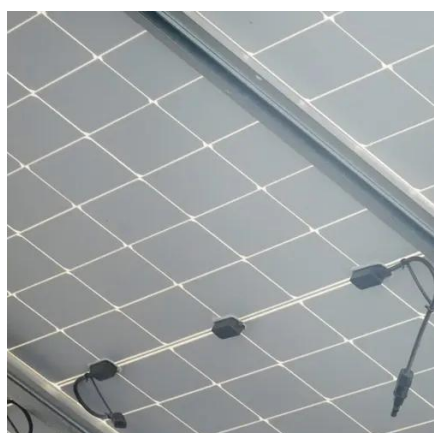


What Is the Actual Size of a 600W Solar Panel? Dimensions, ...

You've probably wondered: "How much roof space do I really need for a 600W solar panel?" Well, let's break it down. As residential and commercial solar installations surge (up 34% year-over-year ...

The Ultimate Guide to Solar Panel Size, Weight & Wattage (2025)

Standard residential solar panels are typically around 5.8 feet long by 3.5 feet wide and weigh between 40 to 50 pounds. However, the exact dimensions depend heavily on the panel's ...



[standard solar photovoltaic panel sizes explained](#)

The standard residential solar photovoltaic panel size you'll see most often is based on a 60-cell configuration, typically measuring about 67 inches long by 40 inches wide.

[Solar Panel Size: 2026 Detailed Guide](#)



In this article, we will discuss all the important aspects of solar panel size. This guide will help you select the right solar panel size through detailed calculations.



Standard Solar Panel Sizes And Wattages (100W-500W Dimensions)

The goal here is to get to the average solar panel size by wattage. You can find typical dimensions of 100W, 150W, 170W, 200W, 200W, 220W, 300W, 350W, 400W, and 500W solar panels summarized ...

[How many watts does a 600A solar panel have? , NenPower](#)

How many watts does a 600A solar panel have? 1. A 600A solar panel typically does not exist as a standard product; instead, the A refers to amperage and not a specific wattage rating. 2. ...





Contact Us

For catalog requests, pricing, or partnerships, please visit:

<https://id2market.eu>

Phone: +34 910 56 87 45

Email: info@id2market.eu

Scan the QR code to access our WhatsApp.

