



Wind is a kind of energy that can be used to generate electricity





Overview

Wind power or wind energy is a form of renewable energy that harnesses the power of the wind to generate electricity. It involves using wind turbines to convert the turning motion of blades, pushed by moving air (kinetic energy) into electrical energy (electricity). Associate Professor of Engineering Systems and Atmospheric Chemistry, Engineering Systems Division and Department of Earth, Atmospheric and Planetary Sciences, Massachusetts Institute of Technology. As renewable energy technology continues to advance and grow in popularity, wind farms like this one have become an increasingly common sight along hills. Wind turbines use blades to collect the wind's kinetic energy. Once built, these turbines create no climate-warming greenhouse gas emissions, making this a “carbon-free” energy source that can provide electricity. Wind energy uses naturally flowing air in the Earth's atmosphere to generate mechanical power and electricity.



Wind is a kind of energy that can be used to generate electricity



Wind Energy

Wind energy is a form of carbon-free, renewable energy, which today makes electricity at a lower average cost than any other form of new-built energy.

Wind power , Description, Renewable Energy, Uses, Disadvantages

Wind power is a form of energy conversion in which turbines convert the kinetic energy of wind into mechanical or electrical energy that can be used for power. Wind power is considered a ...

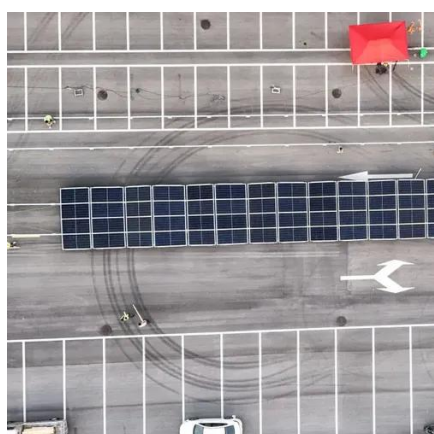


How does wind energy work?

Wind power is a renewable energy source which is used to generate electricity. In this article you can learn about: This resource is suitable for energy and sustainability topics for primary

Energy 101: Wind

Wind turns the propeller-like blades of a turbine around a rotor, which spins a generator, which creates electricity. The terms "wind energy" and "wind power" both describe the process by ...



Electricity generation from wind

Wind flows over the blades creating lift (similar to the effect on airplane wings), which causes the blades to turn. The blades are connected to a drive shaft that turns an electric generator, ...

Wind Energy

Wind energy, or wind power, is created using a wind turbine, a device that channels the power of the wind to generate electricity. The wind blows the blades of the turbine, which are ...



[Wind Energy: How It Works, Advantages And Disadvantages](#)

This is what generates electricity, which is then transferred to the grid to be used in homes, businesses, etc. The larger the blades and higher the wind speed, the more electricity the ...

Wind Power: What is Wind Energy?



Generating wind energy is all about kinetic energy, aka the energy of motion. Anything that moves--a person walking, a dog running, a book falling--has kinetic energy. A wind turbine takes the



[What Is Wind Energy? , Department of Energy](#)

Wind power or wind energy is a form of renewable energy that harnesses the power of the wind to generate electricity. It involves using wind turbines to convert the turning motion of blades, pushed by ...

[Wind Energy , Understand Energy Learning Hub](#)

Wind energy uses naturally flowing air in the Earth's atmosphere to generate mechanical power and electricity. It is a fully renewable resource and has few climate and environmental impacts.





Contact Us

For catalog requests, pricing, or partnerships, please visit:

<https://id2market.eu>

Phone: +34 910 56 87 45

Email: info@id2market.eu

Scan the QR code to access our WhatsApp.

