



Wind is the annual maintenance of the generator set





Overview

Most wind turbines require maintenance at least every 6 to 12 months. This interval is the industry standard recommended by turbine manufacturers and adopted across most wind farms worldwide. In short, maintenance protects three essential aspects of wind energy operations: Safety: preventing accidents from mechanical failures. This ensures ma tors by providing appropriate servicing at the right time. Without a solid plan, you risk unexpected breakdowns, costly repairs, and lost energy production. These RPs represent decades of exper ence from the members of the AWEA O&M Committee.



Wind is the annual maintenance of the generator set

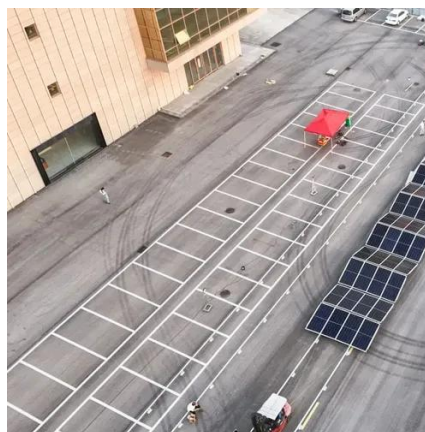


[Periodic Maintenance of Generators: A-Check, B-Check & More](#)

Periodic maintenance refers to scheduled servicing at specific intervals to keep the generator running smoothly. It includes routine inspections, system testing, fluid replacements, and performance ...

[A Simple Guide to Wind Turbine Maintenance](#)

Learn what wind turbine maintenance is, along with key components to manage and practical tips to keep turbines in top shape.



[Wind Turbine Maintenance: Types, Costs and Improvement Tips](#)

Wind turbine maintenance is the process of keeping turbines efficient, safe, and operational for as long as possible. It involves inspections, cleaning, lubrication, and repairs to ...



[Operations and Maintenance Recommended Practices](#)

The AWEA Operation and Maintenance Recommended Practices are intended to provide establish expectations and procedures to ensure all personnel performing service and maintenance on wind ...



Wind Turbine Maintenance Costs: Assessing the Potential of ...

LCOE is helpful to compare projects/technologies with different cash flow profiles and over time. LCOE does not capture the locational and time value of the generated energy and other services.

How Do Wind Turbines Work?

How Do Wind Turbines Work? Wind turbines work on a simple principle: instead of using electricity to make wind--like a fan--wind turbines use wind to make electricity. Wind turns the propeller-like ...



[Wind Turbine Maintenance: A Complete Guide , BGB](#)

Generally, wind turbines undergo routine maintenance regularly, typically every six months to one year. However, certain components may require more frequent inspections or servicing based on their ...

[How Often Do Wind Turbines Need](#)



Maintenance? , Werover

How often do wind turbines need maintenance?
Discover service intervals, costs, and modern predictive solutions to keep turbines running efficiently.



Preventive maintenance for wind turbine generators, AM 500

Preventive maintenance for wind turbine generators, AM_500 nance over the entire lifetime of wind turbine generators. This ensures ma tors by providing appropriate servicing at the right time. It ...

Generator Maintenance Checklist: Monthly & Annual Tasks

Annual maintenance is more comprehensive and usually requires a professional technician. All major manufacturers (Generac, Kohler, Briggs & Stratton, Cummins) require annual ...





Contact Us

For catalog requests, pricing, or partnerships, please visit:

<https://id2market.eu>

Phone: +34 910 56 87 45

Email: info@id2market.eu

Scan the QR code to access our WhatsApp.

