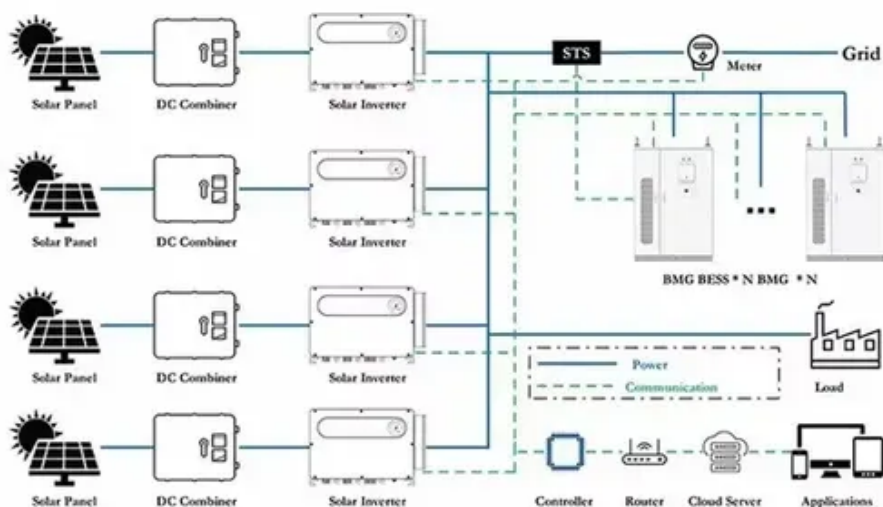




# Wind power generation start wind





## Overview

---

Wind turbines use blades to collect the wind's kinetic energy. The blades are connected to a drive shaft that turns an electric generator, which produces (generates). Wind turbines work on a simple principle: instead of using electricity to make wind—like a fan—wind turbines use wind to make electricity. Wind flows over the blades creating lift (similar to the effect on airplane wings), which causes the blades to turn. Historically, wind power was used by sails, windmills and windpumps, but today it is mostly used to generate electricity. Associate Professor of Engineering Systems and Atmospheric Chemistry, Engineering Systems Division and Department of Earth, Atmospheric and Planetary Sciences, Massachusetts Institute of Technology. Dramatic Cost Competitiveness: Wind energy has achieved remarkable cost reductions, with new wind projects now pricing electricity at around \$26 per megawatt-hour, making it competitive with natural gas at \$28 per MWh and establishing wind as one of the most economical electricity sources available. Every day, wind turbines capture the wind's power and convert it into electricity.



## Wind power generation start wind



### [How Does Wind Energy Work: Complete Guide To Wind Power 2025](#)

Learn how wind energy works with our comprehensive guide covering wind turbine technology, energy conversion, and renewable power generation. Updated 2025.

### [How is electricity generated using wind?](#)

It's a fairly simple process: When the wind blows, the turbine's blades spin which captures energy. This energy is then sent through a gearbox to a generator, which converts it into electricity for the grid, ...



### **How Do Wind Turbines Generate Electricity? Step-by-Step Guide**

How does windmill electricity work exactly? Let's look at it step by step, reviewing the aerodynamics of wind turbines, their major components, innovations, and even how wind industry leaders, KP Energy, ...

### **How Do Wind Turbines Work?**

Wind turbines work on a simple principle: instead of using electricity to make wind--like a fan--wind turbines use wind to make electricity. Wind turns the propeller-like blades of a turbine around a rotor, ...



## Electricity generation from wind

Wind flows over the blades creating lift (similar to the effect on airplane wings), which causes the blades to turn. The blades are connected to a drive shaft that turns an electric generator, ...



## Wind power

A wind turbine installation consists of the necessary systems needed to capture the wind's energy, point the turbine into the wind, convert mechanical rotation into electrical power, and other systems to ...



## Wind Power , SaveOnEnergy

Wind turbines located either on land or off-shore utilize rotor blades to capture the wind's movement. The wind turbine is connected to a generator activated by the moving blades, creating a ...



## Wind Energy



Wind energy, or wind power, is created using a wind turbine, a device that channels the power of the wind to generate electricity. The wind blows the blades of the turbine, which are ...



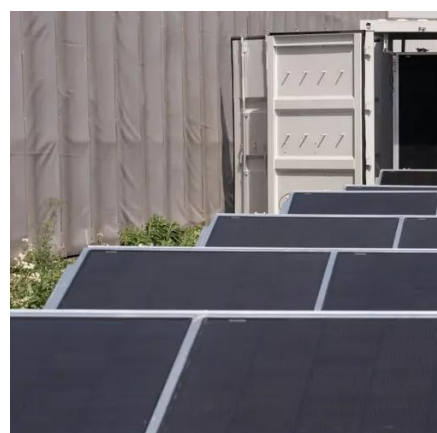
## Wind power , Description, Renewable Energy, Uses, Disadvantages

Wind power is a form of energy conversion in which turbines convert the kinetic energy of wind into mechanical or electrical energy that can be used for power. Wind power is considered a ...



### [From wind energy to electricity generation](#)

Wind installed power has been growing rapidly since the early 1980s. This development concerns many countries and, for the last twenty years, offshore sites. The stakes are such that not a ...



## Wind power

Overview  
Wind farms  
Wind energy resources  
Wind power capacity and production  
Economics  
Small-scale wind power  
Impact on environment and landscape  
Politics

A wind farm is a group of wind turbines in the same location. A large wind farm may consist of several hundred individual wind turbines distributed over an extended area. The land between the turbines may be used for agricultural or other purposes. A wind farm may also be located offshore. Almost all large wind turbines



have the same design -- a horizontal axis wind turbine having an upwind rotor with 3 blades, attach...



## Contact Us

---

For catalog requests, pricing, or partnerships, please visit:

<https://id2market.eu>

Phone: +34 910 56 87 45

Email: [info@id2market.eu](mailto:info@id2market.eu)

Scan the QR code to access our WhatsApp.

