



Wind power generation unit maintenance risks





Overview

Because turbines are large and powerful, poor maintenance can lead to costly damage or serious injury. Hybrid plant development by integrating wind with other power generation technologies (e., solar, battery storage, and hydrogen). net/global-wind-report-2022/ (Right) Median values of failures per turbine per year by different. effective wind farm operations and maintenance. IEEE (Institute of Electrical and Electronic Engineers), NETA (International Electrical Testing Association), SMRP (Society for Maintenance and Reliability Professionals), AGMA (American Gear anufacturer's Association) just to name a few. These. As the wind industry matures in 2025, one thing is clear: wind turbine maintenance is no longer a background task. Yet despite decades of innovation, newer turbines are falling short on reliability. O&M costs typically account for 20% to 25% of the total levelized cost of electricity (LCOE) of current wind power systems.



Wind power generation unit maintenance risks



[A Simple Guide to Wind Turbine Maintenance , SafetyCulture](#)

Importance of Wind Turbines Maintenance
What Maintenance Do Wind Turbines Need?
How Long Do Wind Turbines Last?
Which Wind Turbine Parts Fail Most often?
How Often Do Wind Turbines Require Maintenance?
Maintenance Strategies
How Does Poor Maintenance Affect A Turbine?
What Affects The Maintenance Cost?
What Determines A Wind Turbine'S Lifespan and What Causes Blade Damage?
Using SafetyCulture (Formerly auditor) For Turbine Maintenance
Turbines are a valuable renewable energy source. However, they require regular maintenance to keep them running smoothly. When wind turbines break down, they can cause serious property damage and injure people. So it's essential to maintain your wind turbine regularly. It includes inspecting blades, bearings, gearboxes, and generators. See more on safetyculture Canadian Renewable Energy Association[PDF]

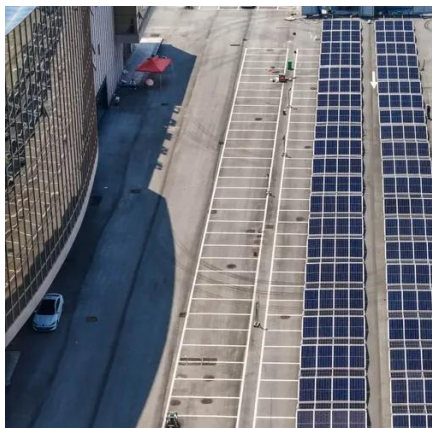
Wind Energy Operations and Maintenance Best Practices

specialized maintenance practices during operations. During the operation, maintenance, and repair of such systems, qualified workers may be required to perform tasks at heights, in restricted spaces, ...

[Wind Energy Operations and Maintenance Best Practices](#)

specialized maintenance practices during operations. During the operation, maintenance, and repair of such systems, qualified workers may be required to perform tasks at heights, in restricted spaces, ...





Wind Turbine Operations & Risk Assessment

Operational risk assessment is a systematic process that identifies, evaluates, and mitigates risks affecting wind turbine performance. With the advent of real-time sensors and IoT devices, continuous ...

Operations and Maintenance Recommended Practices

The AWEA Operation and Maintenance Recommended Practices are intended to provide establish expectations and procedures to ensure all personnel performing service and maintenance on wind ...



Outdoor Cabinet BESS
50 kWh/500 kWh Battery Storage System
Industrial and Commercial Energy Storage

- All In One**
Integrating battery packs
- Intelligent Integration**
integrated photovoltaic storage cabinet
- High-capacity**
50-500kWh
- Rated AC Power**
50-100kW
- Degree of Protection**
IP54
- Altitude**
3000m(>3000m derating)
- Operating Temperature Range**
-20-60°C(Derating above 50 °C)

New Tendencies in Wind Energy Operation and Maintenance

Thus, the results obtained in this paper suggest that there is a change in research on wind farm operation and maintenance, as in recent years, scientific interest in failure has been increasing, ...

Wind Turbine Maintenance in 2025: Risks, Costs & Predictive Strategy

As the wind industry matures in 2025, one thing is clear: wind turbine maintenance is no longer a background task. It's at the centre of how asset owners manage risk, maximise performance, and ...



A Simple Guide to Wind Turbine



Maintenance , Safety Culture

Regular inspections and routine maintenance for wind turbines should be scheduled weekly, monthly, or annually, depending on the component's priority. This is especially important for ...



What Kind of Maintenance Does a Wind Turbine Need?

Without proper maintenance, even a single faulty component can reduce power generation, increase costs, and in extreme cases, cause turbine shutdowns. That's why ...



Wind Plant Operations and Maintenance Challenges and ...

Composable wind farm stores maintenance and repair frequencies and costs. Repair manager schedules equipment operations. WOMBAT evaluates O& M costs using discrete event simulation ...

Risk-averse contextual predictive maintenance and operations ...

To jointly tackle these emerging problems of power systems, it becomes critical to determine the optimal maintenance and operational schedules of a fleet of generators within a risk ...



Wind Turbine Maintenance: A Complete



[Guide , BGB](#)

In this guide, we'll explore the intricacies of wind turbine maintenance, covering the essential tasks to include in a wind turbine maintenance checklist, best practices, and the importance of proactive upkeep.





Contact Us

For catalog requests, pricing, or partnerships, please visit:

<https://id2market.eu>

Phone: +34 910 56 87 45

Email: info@id2market.eu

Scan the QR code to access our WhatsApp.

