



# Wind power generation wind tower regulations





## Overview

---

State compliance with specific energy regulations is mandatory, while federal permits, including FAA clearance for height and NEPA evaluations for environmental impact, are also essential. Wind energy ordinances adopted by counties, towns, and other types of municipalities are one of the best ways for local governments to identify conditions and priorities for all types of wind development. These ordinances regulate aspects of wind projects such as their location, permitting process. Navigate the comprehensive journey of installing a personal wind turbine, from initial assessment to power generation. Installing a windmill on private property is a growing interest for homeowners seeking renewable energy. Communities with good wind resources are increasingly likely to be approached by entities with. The tables that follow list the major federal and state laws, Executive Orders, and other compliance instruments that establish permits, approvals, or consultations that may apply to the construction and operation of a wind energy project on Bureau of Land Management (BLM)-administered lands.



## Wind power generation wind tower regulations



### Siting and Permitting Wind Projects

Understand the complexities of siting and permitting wind energy projects, including federal and state regulations, environmental reviews, and strategies to address community concerns and opposition.

### [Wind Energy Ordinances \(Fact Sheet\), Wind And Water Power](#)

Various states have developed model wind turbine ordinances that municipal and county officials can use as examples when developing their own regulations. An overview of ordinance elements follows.



### [Important Regulations and Permits for Installing a Wind ...](#)

Get ready to navigate the crucial regulations and permits for installing a wind turbine--discover what you need to ensure compliance.

### State and Local Permitting Restrictions on Wind Energy Development

Our interpretation of this data is that at the extreme end of the most restrictive ordinances that are imposed on wind generation, it is likely that they are a result more of political or social

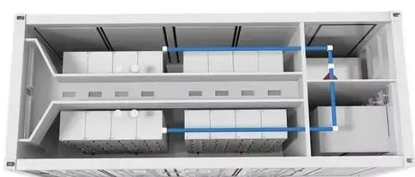


desire ...



### [Residential Wind Turbine Permits: Compliance Made Simple](#)

Learn how to navigate permits and compliance for installing a home wind turbine. Expert advice on local laws, zoning, and successful residential wind energy projects.



## Ordinances , Department of Energy

Explore the resources below to better understand the wind project siting process, including how to analyze wind maps and data, navigate permits and ordinances, and apply best practices for project ...



### [Can I Put a Windmill on My Property?](#)

Navigate the comprehensive journey of installing a personal wind turbine, from initial assessment to power generation.

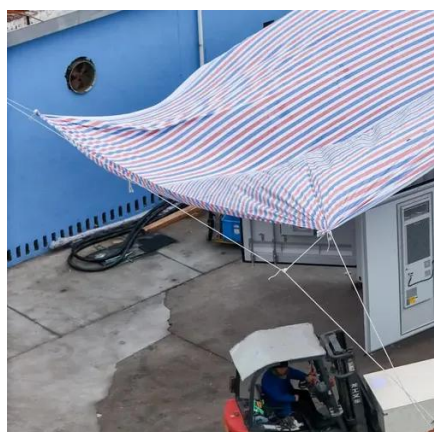


### [Wind Energy Final PEIS: Appendix E:](#)



## Federal and State ...

The tables that follow list the major federal and state laws, Executive Orders, and other compliance instruments that establish permits, approvals, or consultations that may apply to the construction and ...



## **Information Guide: Wind Energy Ordinances , Center For Rural Affairs**

Wind ordinances on the city, county, and state levels may be difficult to understand, whether you are an expert or just becoming familiar with the industry. This guide is meant to assist ...

## ACP 61400-6:2023 Wind Energy Generation Systems

This standard is a modified adoption of International Standard "IEC 61400-6:2020, Wind energy generation systems - Part 6: Tower and foundation design requirements."





## Contact Us

---

For catalog requests, pricing, or partnerships, please visit:

<https://id2market.eu>

Phone: +34 910 56 87 45

Email: [info@id2market.eu](mailto:info@id2market.eu)

Scan the QR code to access our WhatsApp.

