



# Wind power stops generating electricity





## Overview

---

Wind speed is a factor—too little wind leaves turbines idle, while too much wind can also cause shutdowns. Speeds above 25 m/s (about 90 km/hr) can damage equipment, so turbines automatically stop to prevent harm. The capacity of this wind farm is 300 megawatts (200 x 1.5), but how much electricity it will actually produce depends on many factors, and if you look at the average production of all those wind turbines over a certain period of time - usually a year - and you divide that number by the maximum. Transmission constraints and renewable energy curtailment are costing Texas consumers and threatening grid reliability Texas leads the nation in wind energy, producing enough electricity in 2024 to power 11.5 million homes If you've driven past a Texas wind farm, you may have noticed something. Every country has a National Grid whose job it is to keep electricity flowing for all electricity users - domestic, commercial and industrial -24 hours a day, 7 days a week. Wind is a form of solar energy caused by a. With energy consumption causing almost three quarters of global greenhouse gas (GHG) emissions, decarbonising our energy system, starting with electricity, can make or break any effort to limit global warming to 1.



## Wind power stops generating electricity



### Why Do Wind Turbines Not Generate Electricity All The Time

However, there are several reasons why wind turbines stop operating: lack of wind, low wind speed, too strong wind, or turbine maintenance. At very high wind speeds, wind turbines shut ...

### Why Do Wind Turbines Stop?

Insufficient Wind Overview of Wind Speeds Deliberate Turbine Shut-Down Shutting Down A Wind Turbine How Do Wind Turbines Work When It's Not Windy? Sometimes when you see a wind turbine that is not rotating, it is not because there is no wind - it is because the turbine has been deliberately shut down. There are a number of reasons why a turbine would be shut down even while the wind is blowing: See more on energy follower Images of Wind Power Stops Generating electricity Power Generated By Wind Turbine Wind Energy To Generate Electricity Wind Electric Power Generation Wind Generated Electricity Wind Electric Power Siting Of Wind Power Plants Wind Turbines Generate Electricity Wind Power Works Wind Powered Electricity Wind Energy Flow Diagram Wind Turbine Infographic Wind Turbine Process of power generation through wind energy Wind turbines use the Energy Generation Through Wind Power Systems - Technical Articles Electrical Engineering World: How Wind Turbine Generate Electricity? Pros and Cons of Wind Power - Environmental Lessons For Kids - Clark Windmill Energy for Kids - Learn Definition, Facts & Examples How Wind Power Plant Works? - Complete Explanation - Mechanical Booster Wind Energy Power Plants, Wind Power Generation, Wind Mill Working - EEE How Does Onshore Wind Power Work? , Ørsted How is electricity produced by wind power? - SGK-Planet WORKING PRINCIPLE OF WIND POWER , ELECTRICAL WORLD: WORKING PRINCIPLE See alleximwind





## When There Is No Wind, How Are Wind Turbines ...

However, some people wonder how wind turbines keep generating electricity when there is no wind. This article will explain how this is possible using innovative ...



### [Wind Turbine Shutdown: Quick Troubleshooting Guide](#)

When the wind picks up, most people expect wind turbines to spin faster and produce more electricity. But what many don't realize is that during extremely strong winds, turbines actually ...

## Why Do Some Wind Turbines Not Turn

Wondering why some wind turbines aren't spinning? Discover the real reasons turbines stop or appear stationary, how they work, and what's normal. Get clear answers to common turbine ...



114KWh ESS



## Why Do Wind Turbines Stop?

Wind turbines are complex structures, designed to produce maximum renewable energy only when it is safe to do so. Let's explore why a wind turbine stops moving.

## [Why Can't We Generate All Our Energy From Wind ...](#)

Why can't we generate all the electricity we need



from the wind? Learn more about generating energy from wind power.

- LiFePO<sub>4</sub> Battery, safety
- Wide temperature: -20~55°C
- Modular design, easy to expand
- The heating function is optional
- Intelligent BMS
- Cycle Life: > 6000
- Warranty: 10 years



### Why don't wind turbines always spin?

Bottom line: Wind turbines don't always spin--and in Texas, it's often not because the wind isn't blowing. Transmission constraints and grid congestion are preventing clean, low-cost wind ...



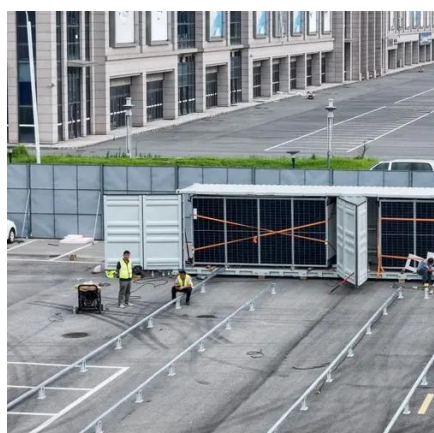
### When There Is No Wind, How Are Wind Turbines Powered?

However, some people wonder how wind turbines keep generating electricity when there is no wind. This article will explain how this is possible using innovative ideas and advanced technologies.



### Why are there wind turbines stopped if there is wind

We will explain why we see wind turbines stopped even though there is enough wind to generate electricity.



### What happens when the wind doesn't



## blow? , Ørsted

Our energy system is rapidly undergoing a revolution. Over the past decade, renewable energy from new wind turbines and solar panels has become cheaper than fossil fuel-based energy. And, in some ...



## **How Do Wind Turbines Work?**

How Do Wind Turbines Work? Wind turbines work on a simple principle: instead of using electricity to make wind--like a fan--wind turbines use wind to make electricity. Wind turns the propeller-like ...



## Contact Us

---

For catalog requests, pricing, or partnerships, please visit:

<https://id2market.eu>

Phone: +34 910 56 87 45

Email: [info@id2market.eu](mailto:info@id2market.eu)

Scan the QR code to access our WhatsApp.

