



Wind turbine wind farm operation and maintenance





Overview

This article offers an in-depth examination of their operations, from initializing, standing by, starting up, grid connection, power generation control, shutdown, fault, and handling emergency stops. ess of interested parties by AWEA O&M Committee. This expertise, often gained from other industry sectors, helps inform, train and support wind energy technicians and managers in their effort to improve. Wind turbines are vital renewable energy sources, harnessing the power of the wind to generate clean electricity. Like any complex piece of machinery, they require thorough, regular maintenance to ensure optimal performance and longevity. Enhances the accuracy and consistency of results. Yaw System Supporting Structure. Repair manager schedules equipment operations.



Wind turbine wind farm operation and maintenance



[Wind Turbine Maintenance: A Complete Guide , BGB](#)

In this guide, we'll explore the intricacies of wind turbine maintenance, covering the essential tasks to include in a wind turbine maintenance checklist, best practices, and the importance of proactive upkeep.

[Operations and Maintenance Recommended Practices](#)

The AWEA Operation and Maintenance Recommended Practices are intended to provide establish expectations and procedures to ensure all personnel performing service and maintenance on wind ...



[Wind Farm Operations and Maintenance - Wind Turbines UK](#)

This comprehensive guide covers the key aspects of O& M for wind farms, offering insights into strategies, techniques, and best practices to optimize the performance of your wind energy assets.

[Understanding Wind Turbine Operations and Maintenance](#)

Wind turbines play an integral part in renewable energy generation. This article offers an in-depth examination of their operations, from initializing, standing by, starting up, grid connection, ...



[A Simple Guide to Wind Turbine Maintenance](#)

Learn what wind turbine maintenance is, along with key components to manage and practical tips to keep turbines in top shape.



[Wind Plant Operations and Maintenance Challenges and ...](#)

This work was authored by the National Renewable Energy Laboratory, operated by Alliance for Sustainable Energy, LLC, for the U.S. Department of Energy (DOE) under Contract No. DE-AC36 ...



[O& M Best Practices for On-site Wind Turbines](#)

The purpose of this Best Practice is to provide an overview of wind turbine components, maintenance requirements, and reporting considerations to ensure safe and efficient operation of on-site wind ...

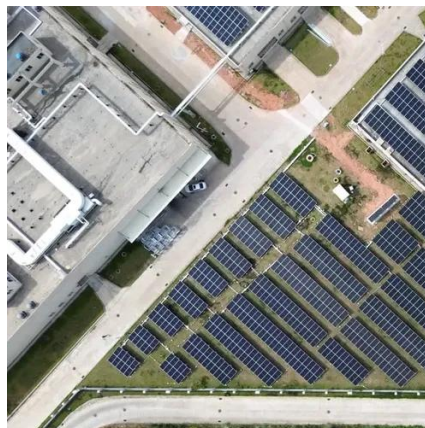


O Operations and maintenance ,



Guide to an offshore wind farm

Operation, maintenance and service (OMS) are the combined functions which, during the lifetime of the wind farm, support the ongoing operation of the wind turbines, balance of plant and associated ...



[Wind Turbine Maintenance: A Comprehensive Strategy for ...](#)

Comprehensive guide on wind turbine maintenance. Learn how preventive, corrective, and condition-based strategies maximize power output, reduce O& M costs, and extend turbine lifespan

[Wind farm operations & maintenance, Windpower ...](#)

Read about wind farm operations & maintenance, including turbine & blade failure, access, monitoring & control systems on Windpower Monthly





Contact Us

For catalog requests, pricing, or partnerships, please visit:

<https://id2market.eu>

Phone: +34 910 56 87 45

Email: info@id2market.eu

Scan the QR code to access our WhatsApp.

